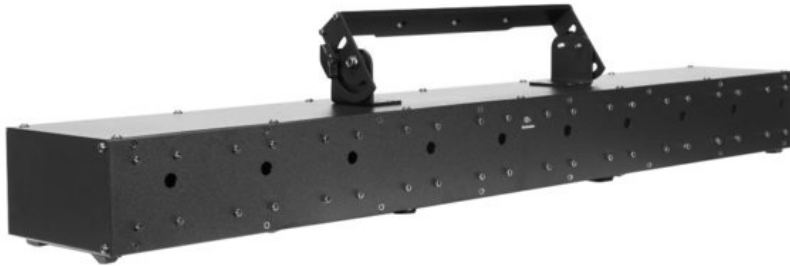


LASERWORLD BeamBar 10RGB

Laser bar class 3B with 10 x laser module in R/G/B, controlled separately

Art. No.: 51743303

GTIN: 7640144996291



List price: 2295.51 €

incl. 19% VAT.

Features:

- Show laser with analog color modulation
- Fan effect; multi beam effect
- Integrated show programs
- The device is cooled by cooling fan
- Control via DMX; stand-alone; sound to light via microphone; master/slave function
- With mounting bracket
- 4 digit 7-segment LED display

Package contents

- 1 x device, 1 x user manual, 1 x power cord, 1 x Interlock, 1 x key

Logistic

EAN / GTIN: 7640144996291

Weight: 14,00 kg

Length: 1.10 m

Width: 0.27 m

Height: 0.25 m

Technical specifications:

| | |
|--------------------|--|
| Power supply: | 100-240 V AC, 50/60 Hz |
| Power consumption: | 72 W |
| IP classification: | IP4X |
| Protection class: | Protection class I |
| Power connection: | Mains input via P-Con (blue), mounting version power supply cord with safety plug |
| Power output: | 1 x P-Con (gray), mounting version |
| Laser class: | 3B |
| Laser color: | R/G/B |

| | |
|--------------------|---|
| Laser module: | Red (R) 120 mW 650nm Green (G) 50 mW 525nm Blue (B) 80 mW 450nm |
| DMX channels: | 13 |
| DMX input: | 1 x 3-pin XLR (M) mounting version |
| DMX output: | 1 x 3-pin XLR (F) mounting version |
| Cooling: | Cooling fan |
| Control: | DMX; stand-alone; sound to light via microphone; master/slave function |
| Housing color: | Black |
| Attachment system: | Mounting bracket |
| Display type: | 4 digit 7-segment LED display |
| Color: | Black |
| Dimensions: | Length: 100 cm Width: 16 cm Height: 10,5 cm |
| Weight: | 10,5 kg |